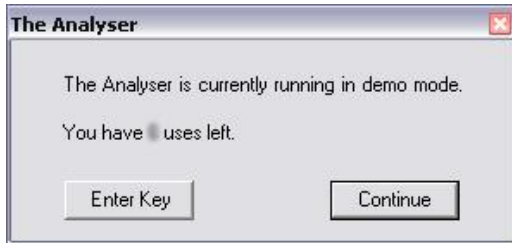
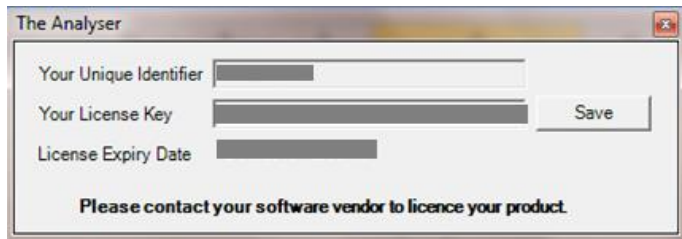


Licencing

The first time you click on 'Cache Sage Data' button, the system will detect that your software is unlicensed and will show you the following message.



If you click the **Continue** button, you can continue to use the software in demonstration mode for up to 10 uses before it will be locked. Click the **Enter Key** button to go to the Licensing window.



At this stage, please contact the support team at Trax UK on **01227 638500** or by email at support@analyseraccounting.com to be given your Licence Key.

- Email your 'Unique Identifier' number to the Trax Representative, who will then email you the 'Licence Key'.
- Copy and paste the licence key, and click save

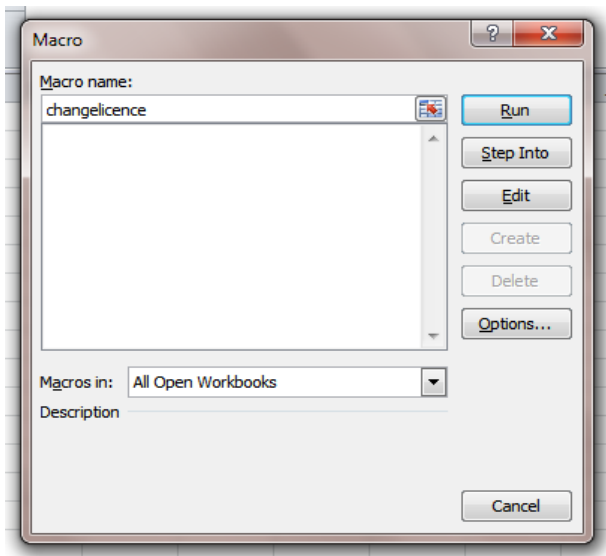
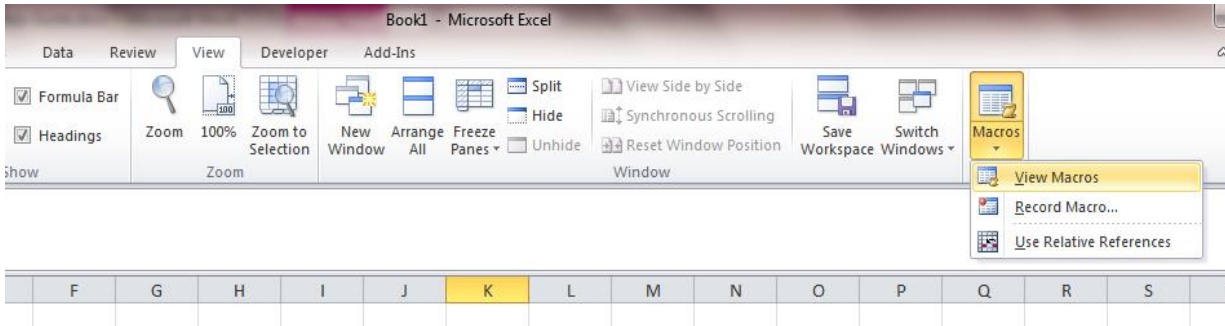
Important:

- If you are installing The Analyser on multiple machines, you will need to licence each machine separately as each machine will have its own Unique ID.

Unable to find the Unique Identifier Key

Once the annual licence for The Analyser runs out, you will need to contact the support to obtain the Licence Key. If you are unable to find the Unique Identifier by clicking on **Cache Sage Data**, then this alternative method can also be used.

- 1) Under the **View** Ribbon, click on **Macros** option and then **View Macros**.



- 2) Type '**changelicence**' in the box, as one word and click **Run**. The licencing window will appear with the Unique Identifier and Licence Key. Then please follow the above licencing method.

